

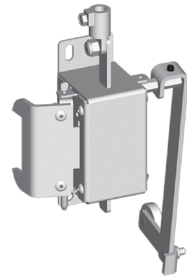
GENERAL ACCESSORIES

MECHANICAL INTERLOCK

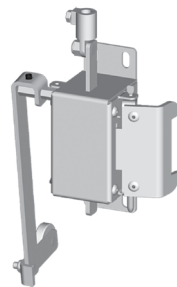
Catalog No.	Description	Qty Per Kit	Product Code
SCE-104941	Interlock for Left Door as Main	1	P2
SCE-105604	Interlock for Right Door as Main	1	P2

Designed for use with Enviroline® two-door enclosures to interlock the master door to the slave door.

*For use on enclosures greater than 30" in height with a center channel.



SCE-104941



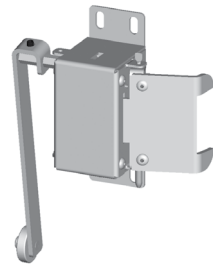
SCE-105604

MECHANICAL INTERLOCK

Catalog No.	Qty Per Kit	Product Code
SCE-103758	1	P2

Designed for use with two-door enclosures with SCE concealed hinges and with both doors hinged on the left to interlock the master door to the slave door.

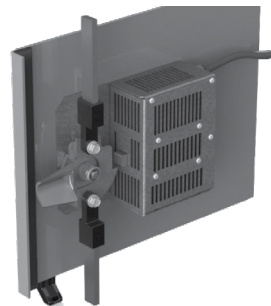
*For use on enclosures greater than 30" in height with a center channel.



ELECTRICAL INTERLOCK

Catalog No.	AMPS	Hz	Volt	Product Code
SCE-E115I	0.2/0.1	50/60	115/230 AC	P2
SCE-E24I	0.06/0.05	50/60	24 DC	P2
SCE-E460I	0.6		400/480 AC	P2

Designed to provide a safety lockout on an enclosure when the circuits are energized. UL recognized. Works with SCE hardware. For installation information, consult our installation manual at www.saginawcontrol.com.



ELECTRICAL INTERLOCK DEFEATER

Catalog No.	AMPS	Hz	Volt	Product Code
SCE-EKDF	10	60	120	P2

Designed to provide a key operated momentary contact switch with the contacts normally closed. Turning the key disengages the circuit to the electrical interlock, allowing access to the enclosure. May be used with SCE-E1151 Electrical Interlock.

4 amp, 125 vac
4 amp, 25 vdc
2 amp, 250 vac

IS24 - Industry Standards -
UL Component Recognized



DISCONNECT ADAPTER KIT

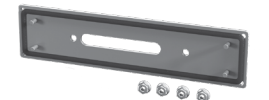
Patent Pending 16/102,913

Catalog No.	Description	Product Code
SCE-UA400V	"U" Style to 400 Amp Style	P2
SCE-UAV	"U" Style to V Style	P2

Designed to convert an SCE - (U) style enclosure to a (V) style. Will accept the following: Allen-Bradley 1494V; Culter-Hammer C361/C371; General Electric Type TDA; ITE Max-Flex FHOH; Square D Class 9422. For installation information consult our installation manual at www.saginawcontrol.com. Made of heavy gauge steel and powder coated ANSI-61 gray. Includes SCE-MDV Mechanical Defeater Kit



SCE-UA400V



SCE-UAV

BLANK DISCONNECT COVER PLATE

Catalog No.	Description	Product Code
SCE-ABDCP	Carbon Steel for Allen-Bradley F/D Cutout	P2
SCE-DCP	Carbon Steel for Standard SCE Cutout	P2
SCE-DCPSS	Stainless Steel for Standard SCE Cutout	P2

Designed to cover disconnect cutouts in the flange of the enclosure and has an oil-resistant gasket to seal against oil, dust, dirt, and water. Made of heavy gauge steel and powder coated ANSI-61 gray. Stainless plate is made of Type 304 stainless with #4 brushed finish.